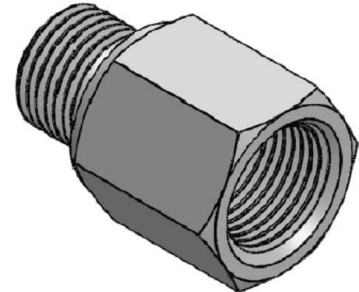
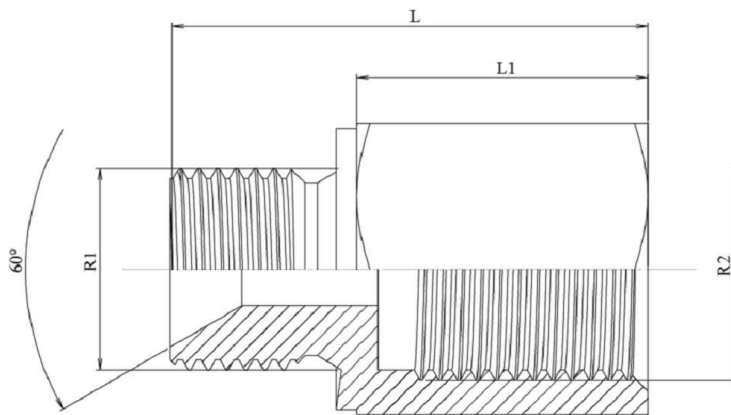


Prolongador macho (60°) - hembra fija BSP

Acero al carbono



R1	R2	L1	HEX 1	L
1/8" BSP	1/8" BSP	14	14	23
1/8" BSP	1/8" BSP	29	14	38
1/4" BSP	1/4" BSP	21	19	34
1/4" BSP	1/4" BSP	33	19	46
1/4" BSP	1/4" BSP	43	19	56
3/8" BSP	3/8" BSP	17	22	31
3/8" BSP	3/8" BSP	30	22	44
3/8" BSP	3/8" BSP	40	22	54
1/2" BSP	1/2" BSP	23	27	39,5
1/2" BSP	1/2" BSP	33,5	27	50
1/2" BSP	1/2" BSP	43,5	27	60
3/4" BSP	3/4" BSP	26,5	32	45
3/4" BSP	3/4" BSP	53,5	32	72
1" BSP	1" BSP	29	41	50,5
1" BSP	1" BSP	62,5	41	84
1"1/4 BSP	1"1/4 BSP	28	50	51
1"1/4 BSP	1"1/4 BSP	69	50	92
1"1/2 BSP	1"1/2 BSP	40	55	65
1"1/2 BSP	1"1/2 BSP	75	55	100
2" BSP	2" BSP	37	70	65
2" BSP	2" BSP	72	70	100