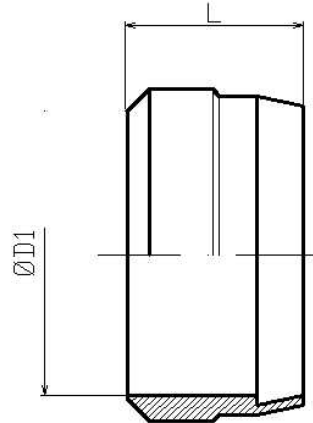


**Anillos de corte DIN 3861**



Artículo	ØD1	Serie	Presión trabajo (bar)	L
<b>DA4LL</b>	4	LL	100	6
<b>DA6LL</b>	6	LL	100	7
<b>DA8LL</b>	8	LL	100	7
<b>H3410106LS</b>	6	L/S	630	9
<b>H3410108LS</b>	8	L/S	630	9
<b>H3410110LS</b>	10	L/S	630	10
<b>H3410112LS</b>	12	L/S	630	10
<b>H3410115L</b>	15	L	315	10
<b>H3410118L</b>	18	L	315	10
<b>H3410122L</b>	22	L	160	10,5
<b>H3410128L</b>	28	L	160	10,5
<b>H3410135L</b>	35	L	160	13
<b>H3410142L</b>	42	L	160	13,5
<b>H3410114S</b>	14	S	630	10
<b>H3410116S</b>	16	S	400	10,5
<b>H3410120S</b>	20	S	400	12,5
<b>H3410125S</b>	25	S	400	12,5
<b>H3410130S</b>	30	S	400	13
<b>H3410138S</b>	38	S	315	13,5