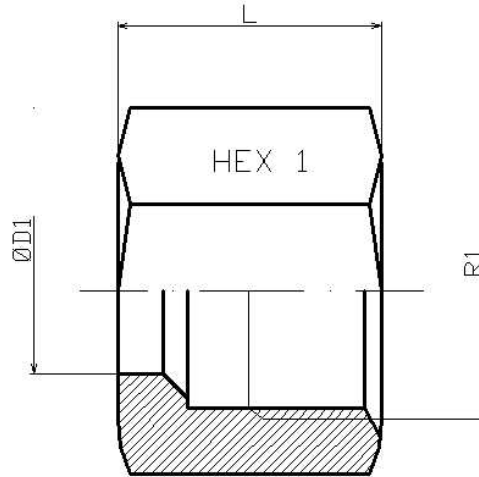


Tuerca Métrica DIN 3870

| Artículo | ØD1 | Serie | R1 | Presión trabajo (bar) | L | HEX 1 |
|------------------|-----|-------|---------|-----------------------|------|-------|
| EA4LL | 4 | LL | M8x1 | 100 | 11 | 10 |
| EA6LL | 6 | LL | M10x1 | 100 | 11,5 | 12 |
| EA8LL | 8 | LL | M12x1 | 100 | 12 | 14 |
| H3410206L | 6 | L | M12x1,5 | 315 | 14,5 | 14 |
| H3410208L | 8 | L | M14x1,5 | 315 | 14,5 | 17 |
| H3410210L | 10 | L | M16x1,5 | 315 | 15,5 | 19 |
| H3410212L | 12 | L | M18x1,5 | 315 | 15,5 | 22 |
| H3410215L | 15 | L | M22x1,5 | 315 | 17 | 27 |
| H3410218L | 18 | L | M26x1,5 | 315 | 18 | 32 |
| H3410222L | 22 | L | M30x2 | 160 | 20 | 36 |
| H3410228L | 28 | L | M36x2 | 160 | 21 | 41 |
| H3410235L | 35 | L | M45x2 | 160 | 24 | 50 |
| H3410242L | 42 | L | M52x2 | 160 | 24 | 60 |
| H3410206S | 6 | S | M14x1,5 | 630 | 16,5 | 17 |
| H3410208S | 8 | S | M16x1,5 | 630 | 16,5 | 19 |
| H3410210S | 10 | S | M18x1,5 | 630 | 17,5 | 22 |
| H3410212S | 12 | S | M20x1,5 | 630 | 17,5 | 24 |
| H3410214S | 14 | S | M22x1,5 | 630 | 20,5 | 27 |
| H3410216S | 16 | S | M24x1,5 | 400 | 20,5 | 30 |
| H3410220S | 20 | S | M30x2 | 400 | 24 | 36 |
| H3410225S | 25 | S | M36x2 | 400 | 27 | 46 |
| H3410230S | 30 | S | M42x2 | 250 | 29 | 50 |
| H3410238S | 38 | S | M52x2 | 250 | 32,5 | 60 |