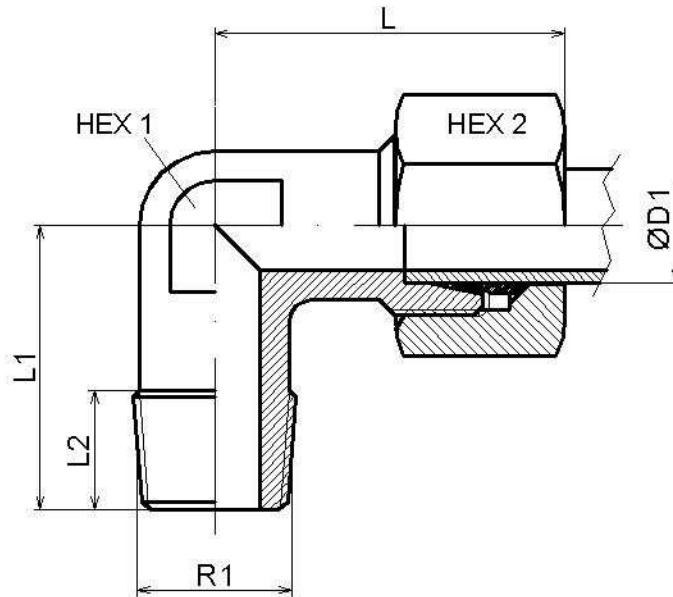


Racor en codo rosca cónica BSPT

Artículo	ØD1	Serie	R1	Presión trabajo (bar)	L	L1	L2	HEX 1	HEX 2
HC3412004LL02	4	LL	1/8" BSPT	100	21	17	8	9	10
HC3412006LL02	6	LL	1/8" BSPT	100	21	17	8	9	12
HC3412008LL02	8	LL	1/8" BSPT	100	23	20	8	12	14
HC3412006LR02	6	L	1/8" BSPT	315	27	20	10	12	14
HC3412006LR04	6	L	1/4" BSPT	315	29	26	12	12	14
HC3412008LR02	8	L	1/8" BSPT	315	29	26	8	12	17
HC3412008LR04	8	L	1/4" BSPT	315	29	26	12	12	17
HC3412008LR06	8	L	3/8" BSPT	315	34	28	12	17	17
HC3412010LR04	10	L	1/4" BSPT	315	30	27	12	14	19
HC3412010LR06	10	L	3/8" BSPT	315	32	28	12	17	19
HC3412010LR08	10	L	1/2" BSPT	315	38	34	14	19	19
HC3412012LR04	12	L	1/4" BSPT	315	32	28	12	17	22
HC3412012LR06	12	L	3/8" BSPT	315	32	28	12	17	22
HC3412012LR08	12	L	1/2" BSPT	315	38	34	14	19	22
HC3412015LR06	15	L	3/8" BSPT	315	36	34	12	19	27
HC3412015LR08	15	L	1/2" BSPT	315	36	34	14	19	27
HC3412018LR08	18	L	1/2" BSPT	315	40	36	14	24	32
HC3412022LR12	22	L	3/4" BSPT	160	44	42	16	27	36
HC3412028LR16	28	L	1" BSPT	160	47	48	18	36	41
HC3412035LR20	35	L	1"1/4 BSPT	160	56	54	25	41	50
HC3412042LR24	42	L	1"1/2 BSPT	160	63	61	22	50	60
HC3412006SR04	6	S	1/4" BSPT	400	31	26	12	12	17
HC3412008SR04	8	S	1/4" BSPT	400	32	27	12	14	19
HC3412010SR06	10	S	3/8" BSPT	400	34	28	12	17	22

Racores DIN 2353

Codos tubo-rosca

Racor en codo rosca cónica BSPT

2/2

Artículo	ØD1	Serie	R1	Presión trabajo (bar)	L	L1	L2	HEX 1	HEX 2
HC3412012SR06	12	S	3/8" BSPT	400	38	28	12	17	24
HC3412012SR08	12	S	1/2" BSPT	400	40	34	14	19	24
HC3412014SR08	14	S	1/2" BSPT	400	40	32	14	19	27
HC3412016SR08	16	S	1/2" BSPT	400	43	32	14	24	30
HC3412020SR12	20	S	3/4" BSPT	400	48	42	16	27	36
HC3412025SR16	25	S	1" BSPT	250	54	48	18	36	46
HC3412030SR20	30	S	1"1/4 BSPT	160	62	54	25	41	50
HC3412038SR24	38	S	1"1/2 BSPT	160	72	61	22	50	60