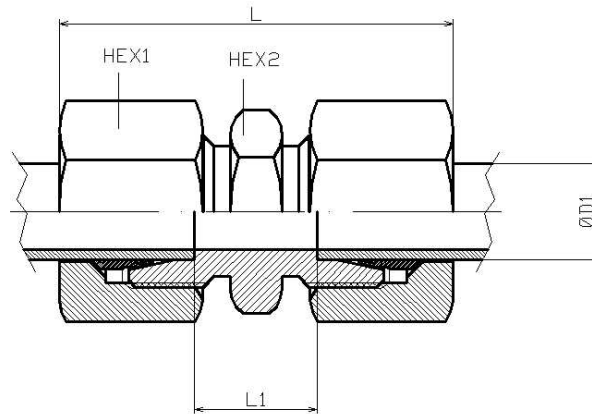


## Unión recta tubo-tubo



Artículo	ØD1	Serie	Presión trabajo (bar)	L	L1	HEX 1	HEX 2
HC3413504LL	4	LL	100	31	12	10	9
HC3413506LL	6	LL	100	32	9	12	11
HC3413508LL	8	LL	100	35	12	14	12
HC3413506L	6	L	500	39,0	10	14	12
HC3413508L	8	L	500	40,0	11	17	14
HC3413510L	10	L	500	42,0	13	19	17
HC3413512L	12	L	400	43,0	14	22	19
HC3413515L	15	L	400	46,0	16	27	24
HC3413518L	18	L	400	48,0	16	32	27
HC3413522L	22	L	250	52,0	20	36	32
HC3413528L	28	L	250	54,0	21	41	41
HC3413535L	35	L	250	63,0	20	50	46
HC3413542L	42	L	250	66,0	21	60	55
HC3413506S	6	S	630	45,0	16	17	14
HC3413508S	8	S	630	47,0	18	19	17
HC3413510S	10	S	630	49,0	17	22	19
HC3413512S	12	S	630	51,0	19	24	22
HC3413514S	14	S	630	57,0	22	27	24
HC3413516S	16	S	420	57,0	21	30	27
HC3413520S	20	S	420	66,0	23	36	32
HC3413525S	25	S	420	74,0	26	46	41
HC3413530S	30	S	420	80,0	27	50	46
HC3413538S	38	S	315	90,0	29	60	55