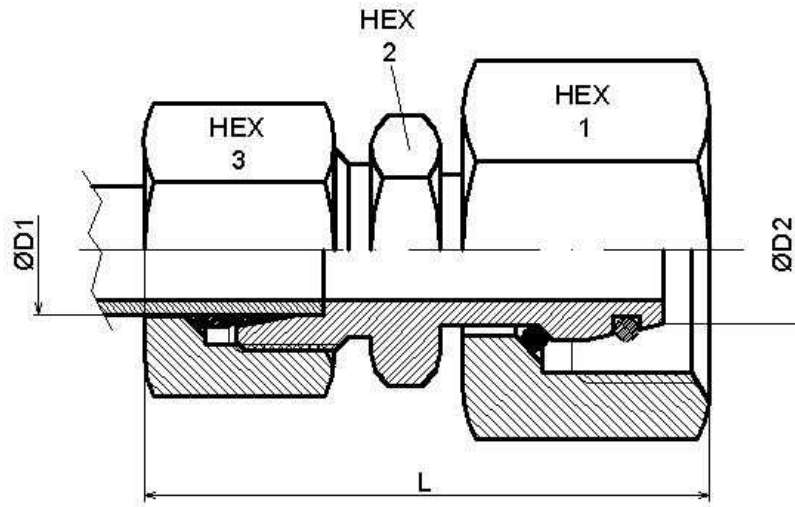


**Racor de reducción TL Métrica (serie pesada)**

Acero Carbono



Artículo	ØD1	ØD2	Serie	Presión trabajo (bar)	L	HEX 1	HEX 2	HEX 3
HC341540608S	6	8	S	630	43	19	14	17
HC341540610S	6	10	S	630	44,5	22	17	17
HC341540810S	8	10	S	630	44,5	22	17	19
HC341540612S	6	12	S	630	45	24	17	17
HC341540812S	8	12	S	630	45	24	17	19
HC341541012S	10	12	S	630	47	24	19	22
HC341540614S	6	14	S	630	48	27	19	17
HC341540814S	8	14	S	630	48	27	19	19
HC341541014S	10	14	S	630	49	27	19	22
HC341541214S	12	14	S	630	49	27	22	24
HC341540816S	8	16	S	420	49	30	22	19
HC341541016S	10	16	S	420	50	30	22	22
HC341541216S	12	16	S	420	50	30	22	24
HC341541416S	14	16	S	420	53,5	30	24	27
HC341540620S	6	20	S	420	54	36	27	17
HC341540820S	8	20	S	420	54	36	27	19
HC341541020S	10	20	S	420	55	36	27	22
HC341541220S	12	20	S	420	55	36	27	24
HC341541420S	14	20	S	420	58	36	27	27
HC341541620S	16	20	S	420	58	36	27	30
HC341540625S	6	25	S	420	56,5	46	32	17
HC341540825S	8	25	S	420	56,5	46	32	19
HC341541025S	10	25	S	420	57,5	46	32	22
HC341541225S	12	25	S	420	57,5	46	32	24

Racores DIN 2353

Uniones Métricas

## Racor de reducción TL Métrica (serie pesada)

Acero Carbono



Artículo	ØD1	ØD2	Serie	Presión trabajo (bar)	L	HEX 1	HEX 2	HEX 3
HC341541425S	14	25	S	420	60,5	46	32	27
HC341541625S	16	25	S	420	60,5	46	32	30
HC341542025S	20	25	S	420	63,5	46	32	36
HC341541230S	12	30	S	420	62,5	50	41	24
HC341541630S	16	30	S	420	65,5	50	41	30
HC341542030S	20	30	S	420	68,5	50	41	36
HC341542530S	25	30	S	420	71,5	50	41	46
HC341541638S	16	38	S	315	69,5	60	50	30
HC341542038S	20	38	S	315	72,5	60	50	36
HC341542538S	25	38	S	315	75,5	60	50	46
HC341543038S	30	38	S	315	78,5	60	50	50