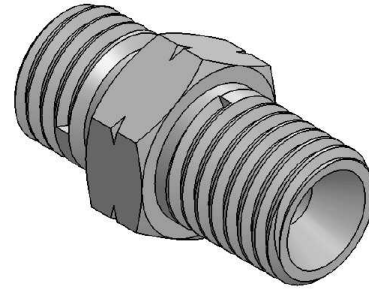
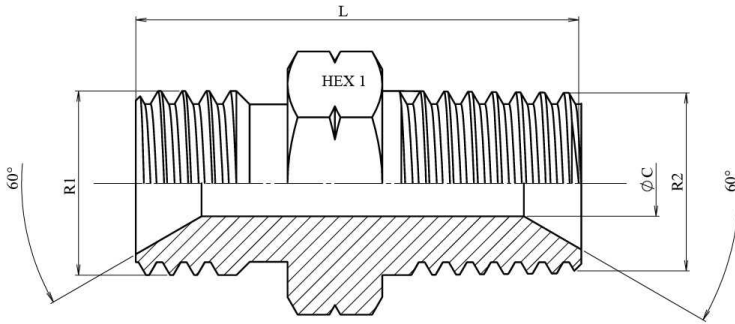


Adaptador macho BSP (60°) - macho NPT

Acero al carbono



Artículo	R1	R2	L	HEX 1	ØC
HID521010202	1/8" BSP	1/8" NPT	23,5	12	3,5
HID521010404	1/4" BSP	1/4" NPT	30,5	14	6
HID521010606	3/8" BSP	3/8" NPT	32	14	8
HID521010808	1/2" BSP	1/2" NPT	40,5	22	11
HID521011212	3/4" BSP	3/4" NPT	44	27	16
HID521011616	1" BSP	1" NPT	52	36	22
HID521012020	1"1/4 BSP	1"1/4 NPT	56	46	28,5
HID521012424	1"1/2 BSP	1"1/2 NPT	59	50	33
HID521013232	2" BSP	2" NPT	66	60	46