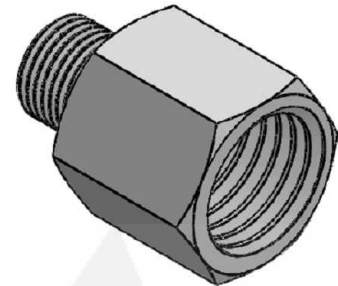
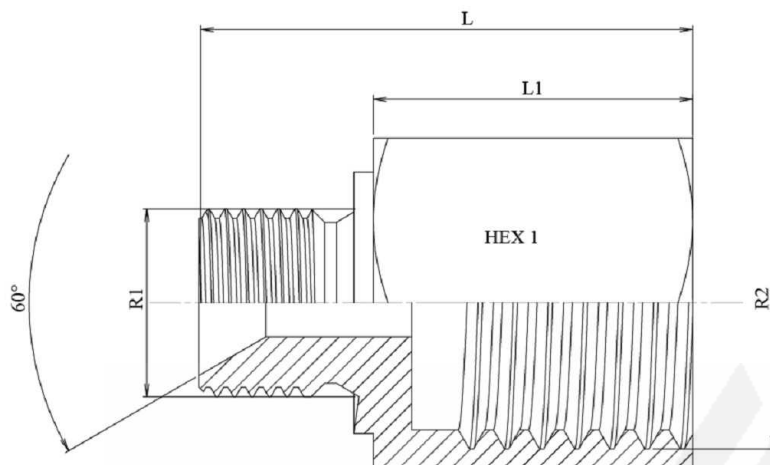


Reductor macho BSP (60°) - hembra fija BSP

Acero al carbono



Artículo	R1	R2	L	L1	HEX 1
HID5250000204	M 1/8" BSP	H 1/4" BSP	25,5	16,5	17
HID5250000206	M 1/8" BSP	H 3/8" BSP	26	17	22
HID5250000402	M 1/4" BSP	H 1/8" BSP	26	13	19
HID5250000406	M 1/4" BSP	H 3/8" BSP	35	22	22
HID5250000408	M 1/4" BSP	H 1/2" BSP	38	25	27
HID5250000602	M 3/8" BSP	H 1/8" BSP	29,5	15,5	22
HID5250000604	M 3/8" BSP	H 1/4" BSP	31	17	22
HID5250000608	M 3/8" BSP	H 1/2" BSP	39	25	27
HID5250000612	M 3/8" BSP	H 3/4" BSP	44	30	32
HID5250000804	M 1/2" BSP	H 1/4" BSP	33	16,5	27
HID5250000806	M 1/2" BSP	H 3/8" BSP	37,5	21	27
HID5250000812	M 1/2" BSP	H 3/4" BSP	46,5	30	32
HID5250000816	M 1/2" BSP	H 1" BSP	49,5	33	41
HID5250001206	M 3/4" BSP	H 3/8" BSP	36	17,5	32
HID5250001208	M 3/4" BSP	H 1/2" BSP	41,5	23	32
HID5250001216	M 3/4" BSP	H 1" BSP	51,5	33	41
HID5250001220	M 3/4" BSP	H 1"1/4 BSP	50,5	32	50
HID5250001608	M 1" BSP	H 1/2" BSP	44	22,5	41
HID5250001612	M 1" BSP	H 3/4" BSP	52	30,5	41
HID5250001620	M 1" BSP	H 1"1/4 BSP	53	31,5	50
HID5250002016	M 1"1/4 BSP	H 1" BSP	51	28	50
HID5250002024	M 1"1/4 BSP	H 1" 1/2 BSP	65	42	55
HID5250002420	M 1"1/2 BSP	H 1"1/4 BSP	61	36	55
HID5250002432	M 1"1/2 BSP	H 2" BSP	65	40	70