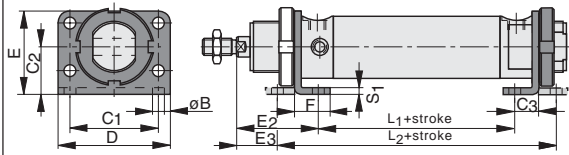


Foot Mounting Type RA-..



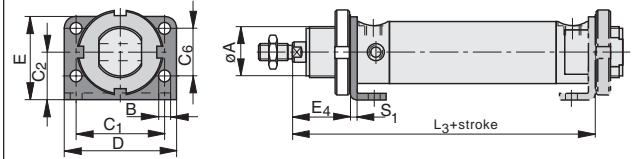
Material: steel, passivated

Dimension Table (mm)

Cyl. Ø	ØB	C ₁	C ₂	C ₃	D	E	E ₂	E ₃	F	L ₁ +stroke	L ₂ +stroke	S ₁
32	6.6	52	28	14	66	49	48	24	21	63	111	4
	6.6	52	28	14	66	49	48	24	21	46.5	94.5	4
40	9	60	33	20	80	58	60	25	30	61	131	5
	9	60	33	20	80	58	60	25	30	41.5	111.5	5
50	9	70	40	20	90	70	64	30	30	70.5	138.5	6
	9	70	40	20	90	70	64	30	30	51.5	119.5	6
63	9	76	45	20	96	80	65	31	30	80	148	6
	9	76	45	20	96	80	65	31	30	57.5	125.5	6

* Dimensions in the grey fields are valid for series RK

Flange Mounting Type RC-..

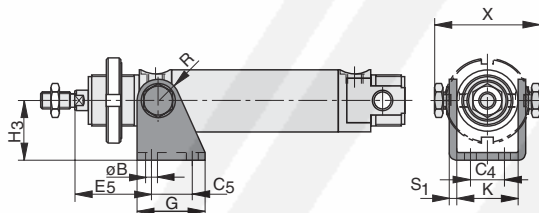


Material: steel, passivated

Dimension Table (mm) for Mounting RC

Cyl. Ø	ØA	B	C ₁	C ₂	C ₆	D	E	E ₄	L ₃ +stroke	S ₁
32	30.1	6.6	52	28	28	66	49	34	125	4
	30.1	6.6	52	28	28	66	49	34	108.5	4
40	38.1	9	60	33	30	80	58	40	141	5
	38.1	9	60	33	30	80	58	40	121.5	5
50	45.1	9	70	40	40	90	70	44	154.5	6
	45.1	9	70	40	40	90	70	44	135.5	6
63	45.1	9	76	45	50	96	80	45	165	6
	45.1	9	76	45	50	96	80	45	142.5	6

Front Trunnion Mounting Type RE-..

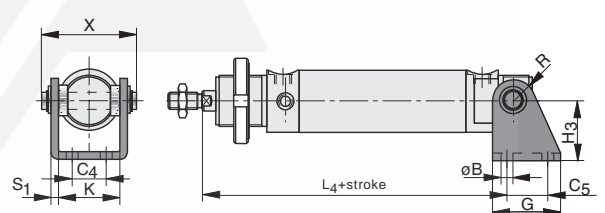


Material: steel, passivated

Dimension Table (mm)

Cyl. Ø	ØB	C ₄	C ₅	E ₅	G	H ₃	K	R	S ₁	X
32	6.6	20	24	45	40	35	36.1	12	4	60
40	9	28	30	54	50	40	45.1	13	5	75
50	9	36	34	59	54	45	55.1	14	6	89
63	9	42	35	63.5	65	50	70.1	16	6	109

Rear Trunnion Mounting Type RB-..



Material: steel, passivated

Dimension Table (mm)

Cyl. Ø	ØB	C ₄	C ₅	G	H ₃	H	K	L ₄ +stroke	R	S ₁	X
32	6.6	20	24	40	35	8	36.1	124.5	12	4	58
40	9	28	30	50	40	10	45.1	141.5	13	5	70
50	9	36	34	54	45	10	55.1	155.5	14	6	86
63	9	42	35	65	50	15	70.1	166.5	16	6	100

